

## Imprinting, Thermo Printing, & Engraving Information

Engraving & Imprinting Information

### MEET OF CHAMPIONS

**Imprinting** on Brass or Aluminum plates up to 2" x 3", maximum 5 lines.  
Setup & Rubber Blanket: \$45.00.  
A minimum of 20 identical plates is required.  
20-49 identical plates \$1.80  
50-99 identical plates \$1.35  
100-up identical plates \$1.05

**Black Letter Engraving on Flexible laser-able Material**  
Plates have adhesive backing. Plate sizes: **5/8", 7/8", 1" width x 3"**.  
Plates included in engraving price.  
Minimum 8 plates, 2 lines identical, 1 line changing  
8 \$4.05 ea., 16 \$3.75, 32 \$3.60,  
64 \$3.45, 96 \$3.30 ea.

**ROSLYN HIGH SCHOOL  
CROSS COUNTRY 1997  
WINNER JOHN SMITH**

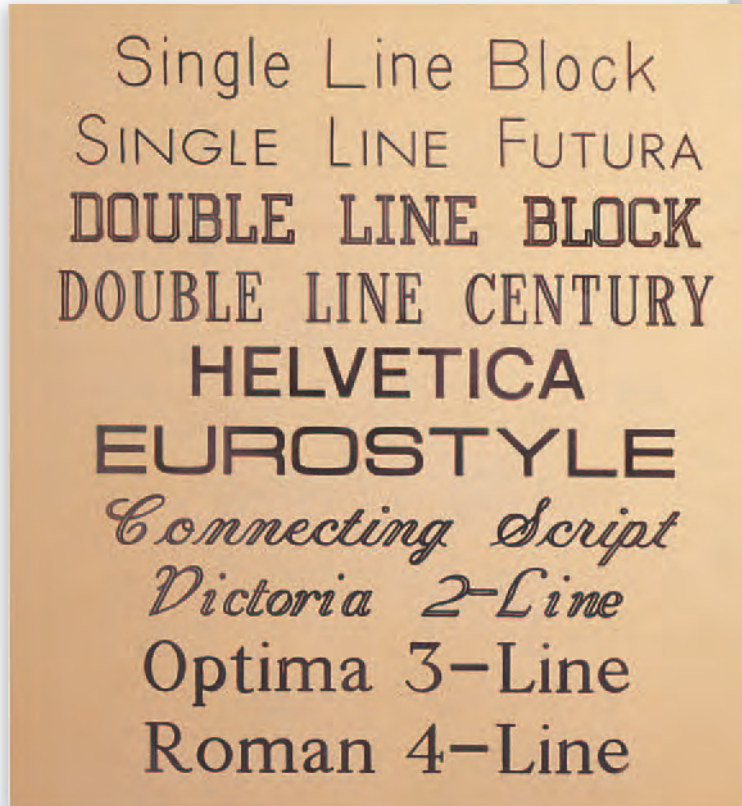
**Thermo Printing** on self adhesive Gold Mylar Strips. No Setup charge.  
**5/8" x 3"** strips, maximum 3 lines. Each additional inch adds \$.45.  
**Minimum** 10 pieces. Identical copy: 10 \$2.85, 50 \$1.95, 100 up \$1.65  
2 identical lines, 1 line change: 10 \$3.75, 50 \$3.30, 100 up \$3.00  
1 identical line, 2 line changes: 10 \$4.65, 50 \$4.20, 100 up \$3.90

**7/8" x 3"** strips, maximum 4 lines. Each additional inch adds \$.60  
3 lines Identical copy: 10 \$3.30, 50 \$2.25, 100 up \$1.80  
4 lines Identical copy: 10 \$3.90, 50 \$2.70, 100 up \$2.25  
2 identical lines, 1 line change: 10 \$4.20, 50 \$3.75, 100 up \$3.30  
3 identical lines, 1 line change: 10 \$4.80, 50 \$4.35, 100 up \$3.90  
1 identical line, 2 lines change: 10 \$5.10, 50 \$4.65, 100 up \$4.20  
2 identical lines, 2 line changes: 10 \$5.70, 50 \$5.25, 100 up \$4.50

### Mechanical Engraving

**Samples of Engraving Styles available: Engraving can be darkened by Oxidizing. If oxidizing is desired use Code starting with "O", not Oxidizing starting with "E". Do not oxidize goldplated Jewelry. All fonts can be Italicised.**

	CODE NOT OXIDIZED	PRICE PER LETTER	CODE OXIDIZED	PRICE PER LETTER
Single Line Block	<b>EK</b>	\$ .24	<b>OK</b>	\$ .30
Single Line Futura	<b>EF</b>	\$ .24	<b>OF</b>	\$ .30
Double Line Block	<b>EB</b>	\$ .24	<b>OB</b>	\$ .30
Double Line Century	<b>ED</b>	\$ .24	<b>OD</b>	\$ .30
Helvetica	<b>EV</b>	\$ .24	<b>OV</b>	\$ .30
Eurostyle	<b>EU</b>	\$ .24	<b>OU</b>	\$ .30
Double Line Connecting Script	<b>ES</b>	\$ .24	<b>OS</b>	\$ .30
Victoria 2-Line	<b>EY</b>	\$ .24	<b>OY</b>	\$ .30
Optima 3-Line	<b>EQ</b>	\$ .24	<b>OQ</b>	\$ .30
Roman 4-Line	<b>EZ</b>	\$ .24	<b>OZ</b>	\$ .30
Larger than normal letters add the following numerals to the engraving code	3/4" letters 1" letters 1 1/4" letters Example: Code <b>ED</b> in 3/4" size is <b>ED34</b> Code <b>OD</b> in 1" size is <b>OD10</b>	<b>34</b> <b>ED</b> \$ .36 <b>10</b> <b>ED</b> \$ .45 <b>14</b> <b>ED</b> \$ .60	<b>OD</b> \$ .42 <b>OD</b> \$ .51 <b>OD</b> \$ .66	
Engraving on plastic or Brass name plate	<b>RF</b> <b>RK</b>	\$ .30 \$ .30		
<b>SINGLE LINE BLOCK OR FUTURA ONLY</b>				
Paper proof required		\$30.00		



### Engraving of Logos

Computerized, Burnished or Diamond Drag Engraving on Satin Brass or Aluminum  
Template charge for logos: \$120.00 to \$270.00. Engraving of Logo: from \$9.00 to  
\$18.00 and up depending on size and complexity of logo.

NOTE: Holloware bowls 6": \$.75 per letter (code EH), 8" & 10" \$1.05 per letter (code EJ). Wine coolers \$1.20 per letter (code EW).  
8", 10" bowls and wine coolers can only be engraved in SINGLE LINE BLOCK or DOUBLE LINE CENTURY. 6" Bowls, Trays and Coffee Mugs in any font.

Trays \$.75 per letter (code EH). Coffee mugs, Direct Engraving on Stainless Steel, Aluminum, Pewter: \$.75 per letter (code EH). On Pewter castings \$.75 per letter (code EH).

## Laser Engraving

Laser Engraving can only be used on Coated Material, Black or Color coated Brass, Aluminum or Brass plated Steel.

### Samples of Engraving Styles Suitable for Laser Engraving on Coated Plates

	CODE	PRICE PER LETTER
Helvetica	<b>EV</b>	\$.24
Times Roman	<b>EZ</b>	\$.24
Victorian-Lucinda	<b>EY</b>	\$.24
Double Line Century	<b>ED</b>	\$.24
French Script	<b>ES</b>	\$.24
Eurostyle-Serifa	<b>EU</b>	\$.24
Single Line Block, Gothic	<b>EK</b>	\$.24
Commercial Script	<b>EC</b>	\$.24
Arial	<b>EA</b>	\$.24



#### Engraving on High Gloss, Polished Wood Plaques

White or Gold Enameled filled Letters. \$.75 per Letter.

#### Engraving on Wood Picture Frames

\$.60 per Letter.

#### Engraving on Wood Plaques

(PN5838 page 75) \$.36 per Letter.

#### Engraving on Wooden Pen boxes.

(Pages 118, 119) Desk Items (page 116)

1 line 1 \$9.00, 10 \$6.00, 20 \$5.25

2 lines 1 \$15.00, 10 \$11.25, 20 \$10.50

3 lines 1 \$22.50, 10 \$18.00, 20 \$16.50

Logos: Approx. \$18.00

#### Wooden Pens (pages 118,119)

Per line 1 \$5.25, 10 \$4.50, 20 \$3.75

### Engraving on Glass or Optical Crystal

Laser engraving on Glass is priced by line, not letters. The One piece price includes the set up time.

5 & 10 piece prices are for identical engraving. Changes in copy add additional set up cost, depending on the number of line changes.

If the line is too long so that it does not fit, a line may have to be split.

1 line	1 pc. \$17.25,	5 \$7.50,	10 \$6.00	5 lines	1 pc. \$40.50,	5 \$22.50,	10 \$19.50
2 lines	1 pc. \$24.00,	5 \$11.10,	10 \$9.00	6 lines	1 pc. \$46.50,	5 \$25.50,	10 \$21.00
3 lines	1 pc. \$30.00,	5 \$15.00,	10 \$13.50	7 lines	1 pc. \$49.50,	5 \$28.50,	10 \$22.80
4 lines	1 pc. \$34.50,	5 \$18.60,	10 \$15.90	8 lines	1 pc. \$54.00,	5 \$31.50,	10 \$24.00

Logo: \$15.00 regardless of quantity.

Price may vary for large logos or a complex design with dense engraving.

### Logo Engraving

Engraving depends on the size and intricacy of design.

An average logo up to 2" costs \$15.00 ea, regardless of quantity.

Larger logos can cost \$18.00 or more depending on the area and density of design. For accurate quoting submit design of logo.

Paper proof required \$30.00. Camera Ready Art supplied.

Charge for Digitizing: \$30.00. Black and White high resolution (at least 600 dpi) laser prints required. Images must be very clean, crisp and clear; no fuzzy or jagged edges.

For Digital Artwork: We work primarily on the PC platform.

We cannot accept MAC files.

We prefer Corel Draw over all other formats.

Corel Draw: All text should be converted to curves, with hard copy included.

Adobe Illustrator: Convert all type to "outlines" and include hardcopies.

Please contact us before sending artwork in a format not listed above.

Sending Art to Classic Medallics: If you are sending artwork on disk we must receive a hardcopy to insure accurate rendering.

On disk: We accept standard floppy disks, 100MB ZIP disks, and Cd-roms.

E-mail: [sales@classic-medallics.com](mailto:sales@classic-medallics.com) or individual customer service rep's e-mail.